

HI-PERFORMANCE FULL VIEW DOOR

MODEL 390-HPD

DOOR CONTROLLER STANDARD FEATURES



Nema -4/4x Control Panel with digital display.



Easy to program digital open and close limits

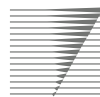


Adjustable door speed



Accepts most various types of access control

OPTIONAL FEATURES



Laser Light Curtain

Additional safety device - Typical light curtains only protect the lower 6 feet of the door opening. Our laser light curtain protects the opening from top to bottom. If the door is in motion and an object passes through the door at any point, the door will stop and reverse to its full open position.



Special Materials and finishes

Option for stainless steel, anodized aluminum, powder coated, or hot dipped galvanized steel



Full View Curtains

Manufactured with either 2" or 4" polycarbonate panels with aluminum rib connectors

Advanced Door Technologies

34 Cystal Street, East Stroudsburg, PA 19301

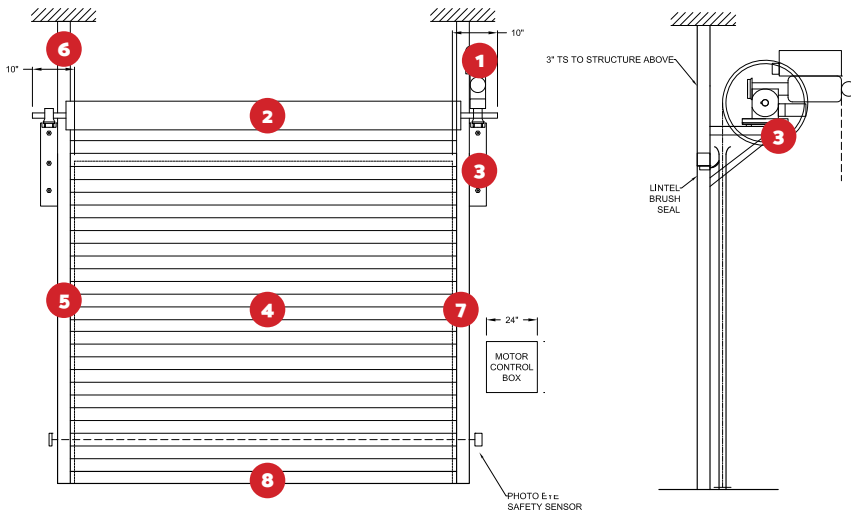
Tel (570) 421-5929 | (877) 238-1001

Email sales@adtdoor.com

www.adtdoor.com

HI-PERFORMANCE FULLVIEW DOOR

MODEL 390-HPD



MOTOR 1 Direct drive with integrated anti-fall device. No roller chain or drive sprockets

DOOR BARREL 2 Springless design, reduces maintenance requirements and allows for high speed capability

BRACKETS 3 Floating door barrel supports. Keep door curtain continuously aligned with the door track, reducing friction and enabling higher door speeds up to 48"/sec opening and 24"/sec closing.

CURTAIN 4 2" or 4" polycarbonate panels connected by 1.25" aluminum ribs.

GUIDES 5 Steel angles guides standard with UHWM anti-wear strips to reduce friction and curtain wear.

MOUNTING TUBES 6 The door is self supporting. Tubes are anchored to the floor and attached to the door jambs. No addition header support required.

WEATHER SEALS 7 Brush seals around the sides and top of the door.

BOTTOM BAR 8 Two structural angles with a wireless safety edge. Edge forms a seal between the door and the floor while acting as a safety. Reversing the door if it hits something.

HIGHLIGHTS



HIGH CYCLE LIFE AND LOW COST OF OWNERSHIP

Our line of Hi-Performance Doors offers *unparalleled performance* when compared to traditional rolling steel doors. The *elimination of springs* and the use of a *direct drive operator* allows this door to operate for over 500,000 cycles with little maintenance and achieve speeds of up to 48" per second.



SMOOTH HIGH SPEED OPERATION

The variable speed operator features a soft start and stop to *minimize wear and tear* for both the door and drive system. The innovative floating-end bracket design further reduces friction and allows the HPD door to open at up to 48" per second and to close at 24" per second.



ENERGY EFFICIENCY

The faster the door opens and closes means less air is exchanged with the outside. *Reducing your heating and cooling costs* and help keep a stable temperature in your work environment.



RELIABLE

A direct drive system with no more springs! We have solved the two biggest causes of rolling door failure. Normally, springs operate with a maximum 100,000 cycle life and are costly to replace. Our direct drive system removes the drive chain and sprocket, which are prone to dis-alignment and cause door failure. The door to stop functioning or worse fall.

Advanced Door Technologies

34 Cystal Street, East Stroudsburg, PA 19301

Tel (570) 421-5929 | (877) 238-1001

Email sales@adtdoor.com

www.adtdoor.com

