

# OUR PRODUCTS



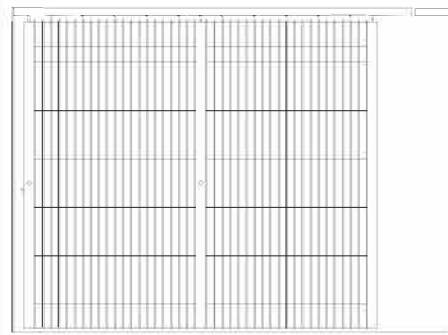
Counter Top Protection

Custom Curves



## MODEL 850

Open Rod Straight Grille



## MODEL 860

Polycarbonate Panel Grille

## MODEL 870

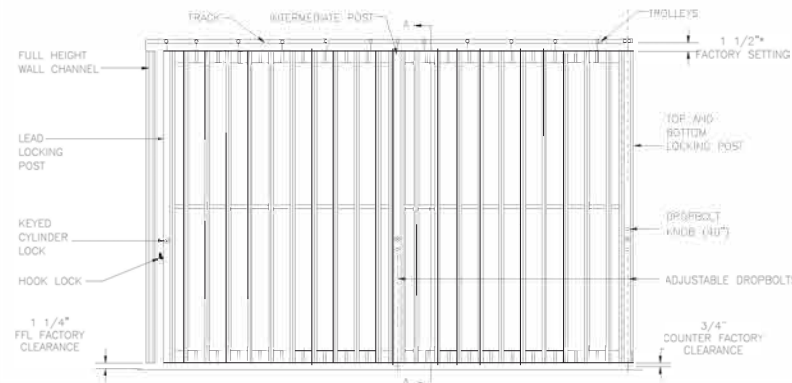
Sliding Gate

## MODEL 880

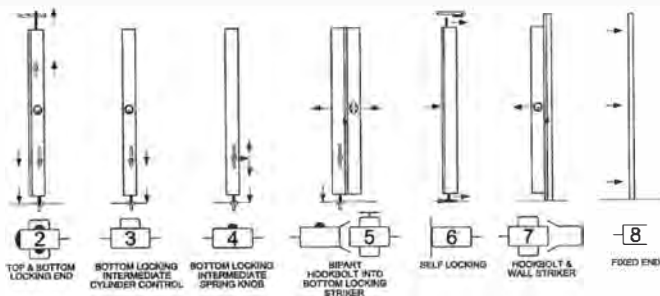
Perforated Panel Grille

## MODEL 890

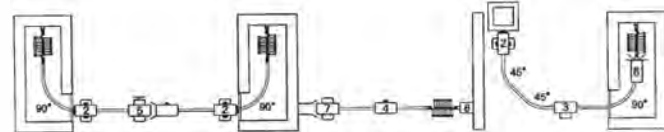
Aluminum Panel Grille



## LOCKING



## SAMPLE LAYOUTS



Cylinder-controlled lock posts with self-adjusting steel floor bolts and top bolts are provided for grille ends, and intermediate posts with steel floor bolts are supplied for (up to) every 10 feet of grille. Dust-free, stainless top and floor sockets are included, along with bipart egress assemblies as required.



# Side Folding Grille

[www.unitedsteelproducts.com](http://www.unitedsteelproducts.com)

**SAFE  
STYLISH  
SECURE**

**WE DON'T TAKE RISKS WITH YOUR BUSINESS, AND NEITHER SHOULD YOU.**

Choose side-folding grilles by United Steel Products and find out why thousands of businesses trust us to keep safe what they value most. Proudly made in the USA.



34 North Crystal Street, East Stroudsburg, PA 18301

P (570) 421-5929 F (570) 421-1795

[www.adtdoor.com](http://www.adtdoor.com)

## Side Folding Grille



MODEL 850



MODEL 860



MODEL 870



MODEL 880



MODEL 890

### Open Straight Folding Grille

**1.5 Lbs** per sq foot across opening

Allow your premises to shine with the Model 850, a lightweight solution whose vertical lines recreate a liberating feeling of open space. Fading seamlessly into any décor, it offers subtle protection without ever being intrusive, making it an ideal choice as an area divider in schools, hospitals, and offices.

### Polycarbonate Panel Grille

**2.5 Lbs** per sq foot across opening

For environments where visibility and protection are needed, the Model 860 is an exceptional option. Beautiful, graceful, yet highly functional, high visibility and security come together in one elegant package. This model also allows for customization; for increased security, solid aluminum panels can be used in place of the standard 1/8" Lexan polycarbonate.

### Criss Cross Folding Grille

**3.0 Lbs** per sq foot across opening

The Model 870 folding closure delivers sleek, rugged security with semi-open visibility—ideal for retail storefronts that demand both protection and presentation. More durable than our Model 850 open-style grille, it features a premium aluminum build, smooth operation, and customizable finishes. Offered in straight or checkerboard patterns, it's trusted in malls, kiosks, and counters for its stylish design and reliable performance.

### Perforated Panel Folding Grille

**3.0 Lbs** per sq foot across opening

Combine the transparency of glass with the solid strength of steel and you have the Model 885. Micro-perforated steel panels provide an impression of security while also allowing light and air to flow freely through the divider, and its semiopacity complements any ambience.

### Aluminum Panel Folding Grille

**3.0 Lbs** per sq foot across opening

A contemporary, handsome solid pattern distinguishes the Model 880. Rugged and open, this striking design provides protection as attractive as it is strong. Schools, hospitals, and offices benefit from its ability to blend with its surroundings while simultaneously standing out as a unique vision.

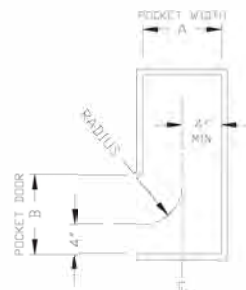
### STACKING DIMENSION

Curtain Width	Stack Clearance
8'-0"	2'-0"
10'-0"	2'-7"
12'-0"	3'-0"
14'-0"	3'-4"
16'-0"	3'-8"
18'-0"	4'-0"
20'-0"	4'-5"
25'-0"	6'-0"
30'-0"	6'-8"
35'-0"	7'-8"
40'-0"	8'-8"

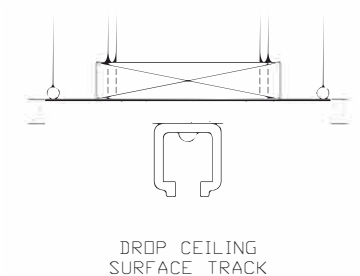
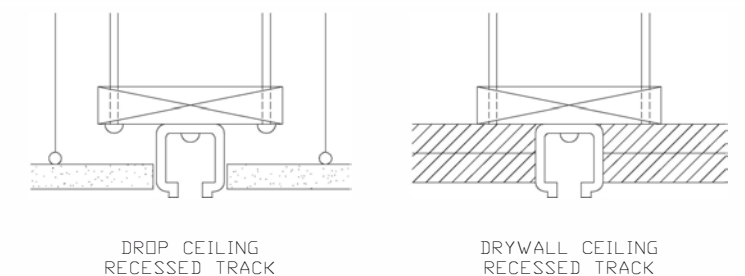
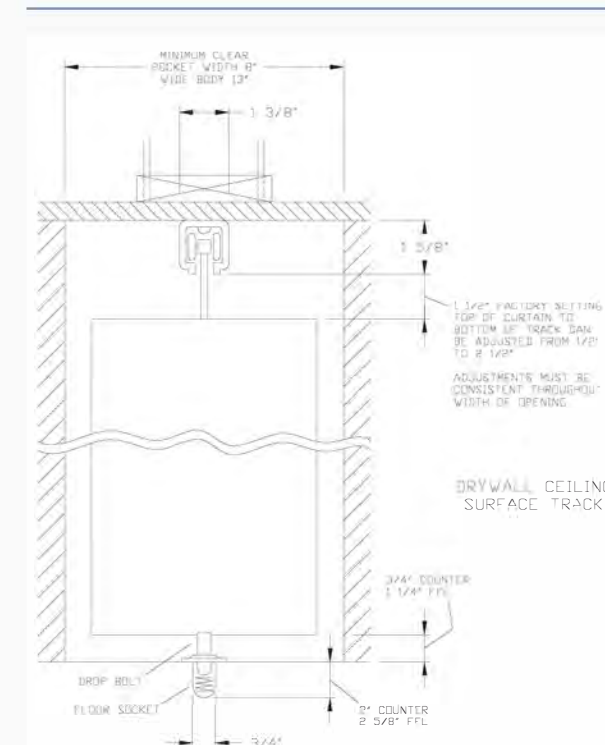
Note: The maximum space between locking posts is 10' for full height doors, 6'-0" on standard counter height and at center of every curve. Standard: 1 3/16" per linear foot plus posts. Min. clear pocket width - 8". Add 3" per stack per locking post.

### RIGHT ANGLE POCKET SPECIFICATIONS

RADIUS 10"		RADIUS 14"	
"A" Pocket Width	"B" Pocket Door Width	"A" Pocket Width	"B" Pocket Door Width
8"	14"	8"	18"
9"	10 3/4"	9"	13 3/4"
10"	9 1/2"	10"	12"
11"	8 3/4"	11"	11"
12"	8 1/4"	12"	10"
13"	8"	13"	9 3/4"
		14"	8 3/4"
		15"	8 1/2"
		16"	8 1/4"



### STRUCTURAL MOUNTS



Note: Load requirements are 3 lbs per square foot and 200 lbs per linear foot stacked. Threaded rod 1/2" with 2" X 6" wood stud shown. Other acceptable mounts include 2" X 4" steel or wood stud. A column is not required for support. Curtain height is adjustable up to 1" up or down without removal.